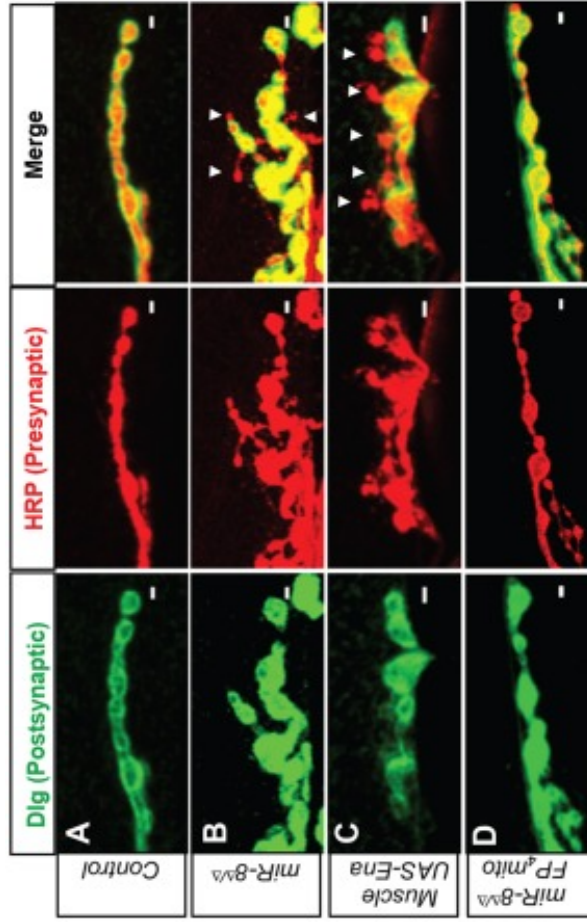
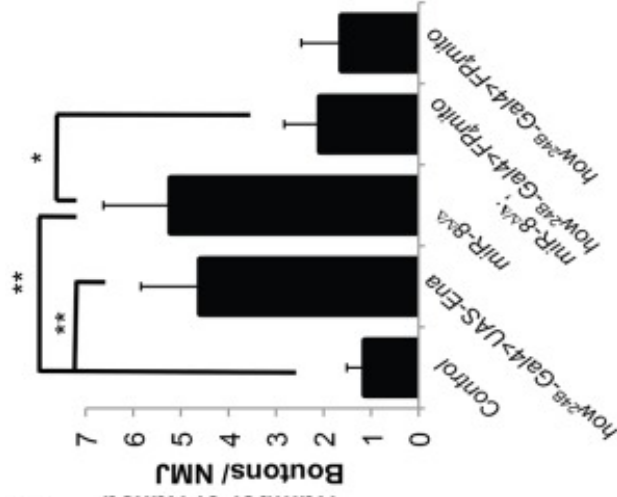


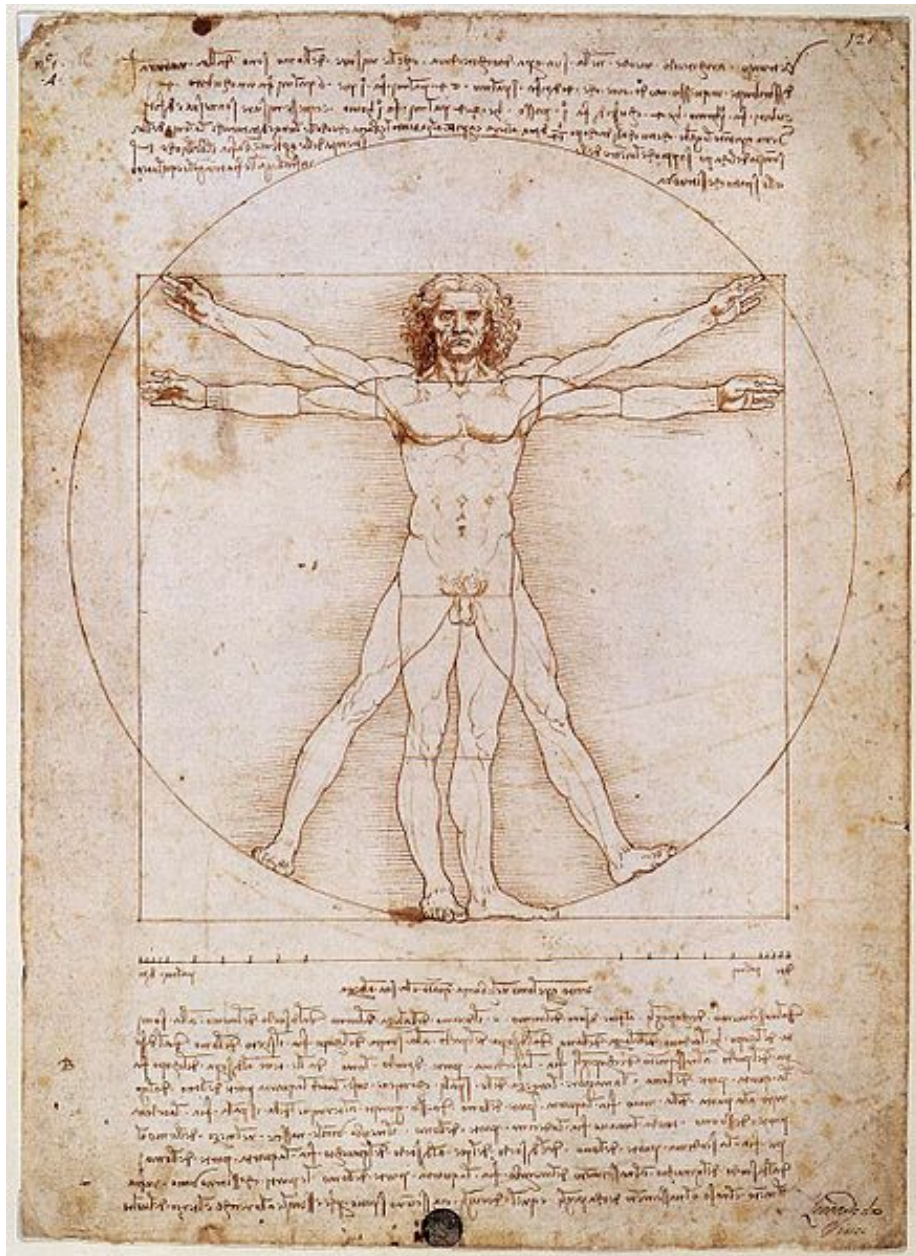
L. Luo *et al.*, *Neuron* **82**, 1115–1128 (June 2014)
<http://dx.doi.org/10.1016/j.neuron.2014.05.010>



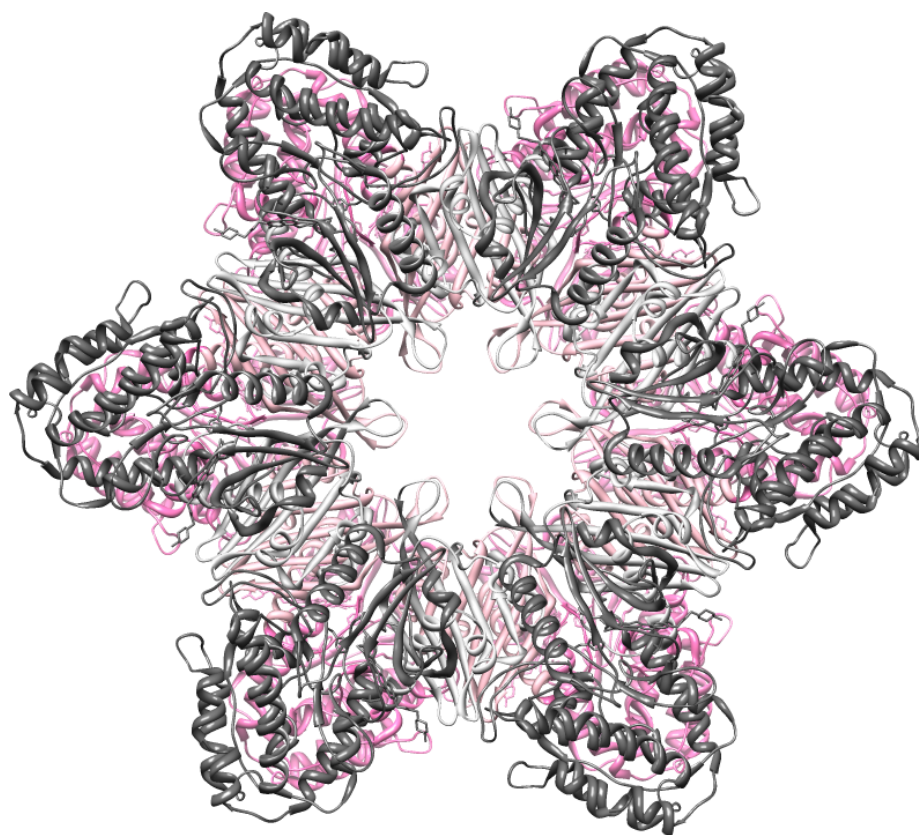
E Number of Naked Boutons/NMJ



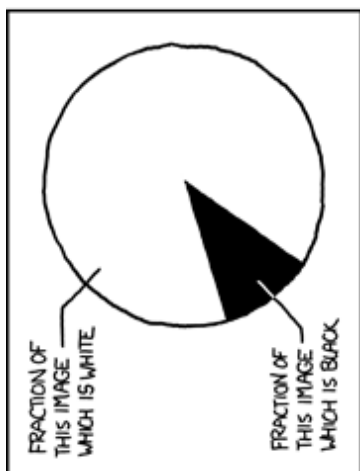
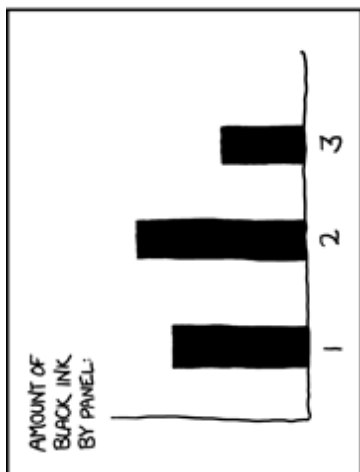
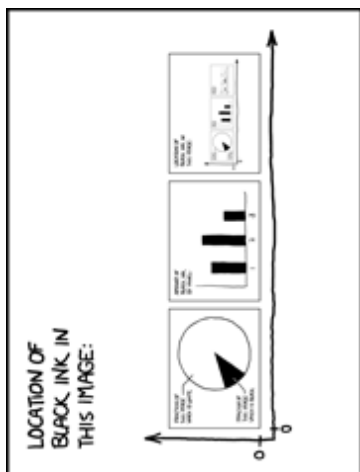
C. M. Loya *et al.*, *Development* **141**, 1864–1874 (May 2014)
<http://dx.doi.org/10.1242/dev.105791>



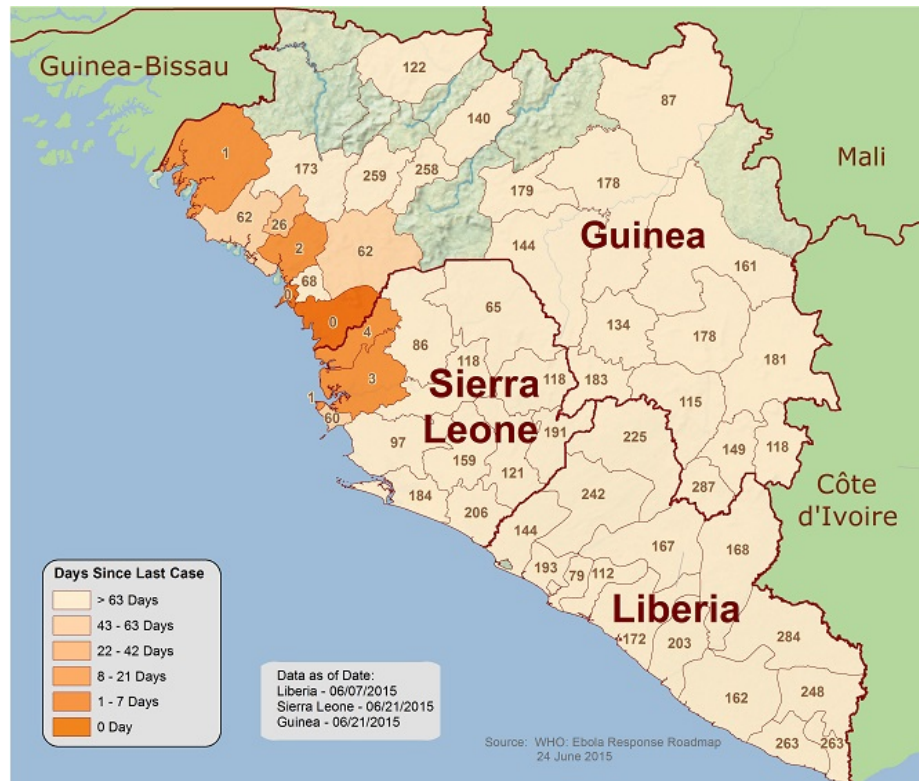
L. Da Vinci, *Vitruvian Man*, Pen, ink, watercolour and metalpoint on paper, 1492, <https://commons.wikimedia.org/wiki/File:Vitruvian.jpg>



L. H. Chao *et al.*, *Cell* **146**, 732–745 (Sept. 2011)
<http://dx.doi.org/10.1016/j.cell.2011.07.038>
(Molecular graphics produced using Chimera: E. F. Pettersen *et al.*, *J Comput Chem* **25**, 1605–1612 (Oct. 2004))
<http://dx.doi.org/10.1002/jcc.20084>



R. Munroe, *Self-Description*, web comic, Jan. 2010, <https://xkcd.com/688/>



Centers for Disease Control and Prevention, “2014 Ebola Outbreak in West Africa - Outbreak Distribution Map”, June 2015, <http://www.cdc.gov/vhf/ebola/outbreaks/2014-west-africa/distribution-map.html>



NASA/JHUAPL/SWRI, *Approaching Pluto*, July 2015, http://solarsystem.nasa.gov/multimedia/display.cfm?Category=Planets&IM_ID=20233